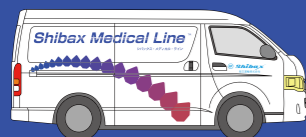


Transportation Service

Specialist Transportation Vehicle



Service name: Shibax Medical Line
Service name: Shibax Crystal Line

Dry ice storage container



Transport of frozen cells is possible.

Import and Export

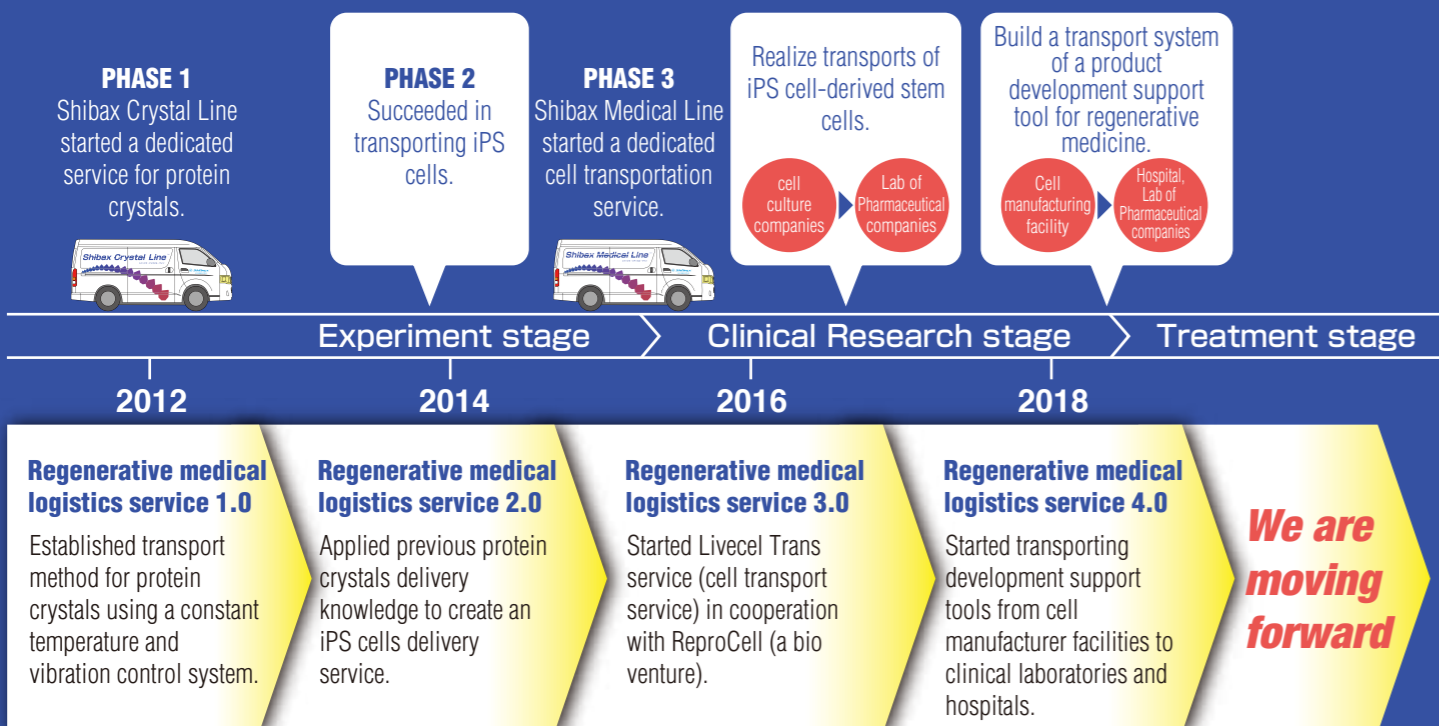


Transport materials overseas by air is also possible with a specifically designed box.
Please contact us for more details.

Clients using our service

Universities, Pharmaceutical companies, medical institutions, Research Institutions, cell Manufacturer.

The progress of medical logistics



The world's first medical delivery service

“Live” cell transport

Shibax Crystal Line™
Shibax Medical Line™



We will support research and development of drug discovery and regenerative medicine with our transportation service

Pharmaceutical low molecular Protein crystals
Transport success rate **100%**

iPS Cells (live or frozen)
Transport success rate **100%**

ShibaMata
On TIME & IN THE BEST

ISO9001 Certification
Professional Medical Logistics

SHIBAMATA TRANSPORT Co., Ltd.
<http://www.shibaxmedicalline.com/>

Tokyo
TEL.048-666-3966 FAX.048-666-4419
Second Bld.4F-B,3-306-1 Miyaharacho, Kita-ku Saitama-shi, Saitama, 331-0812, Japan

Osaka
TEL.06-6748-9700 FAX.06-6748-9701
3-9-5, Honjo Nishi, Higashiosaka-shi, Osaka, 578-0965, Japan

We have joined in several medical industry associations.



Laboratory Conditions Delivery Service

We have the world's first service for safe and reliable transport of tissues, delicate protein crystals and stem cells such as iPS cells and ES cells using customized vehicles.

Vibrations reduction technology

We use specialist vehicles with firmly fixed incubators on anti-vibration tables (equipment).



[Result of a vibration test]



Constant Temperature Controlled environments/technology

Multiple incubators that can set constant temperature from 37°F to 140°F (3 °C to 60 °C) are available, which makes it possible to set multiple temperature zones at once.



Maintain the concentration of Co2 at 5%.

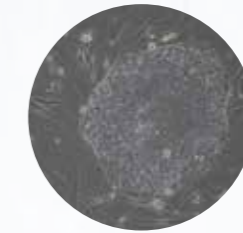
It is possible to maintain 5% of Co2 concentration during delivery, using a special container.



Transport success rate **100%**

- Protein crystals **live**
- Pharmaceutical low molecular **live**
- iPS Cells **live frozen**
- iPS myocardial cell **live**
- iPS hepatocyte **live**
- Hepatocyte **live**
- Animal Cells **frozen**

A transport test IPS cells before and after delivery. The results was that the cells were identical. A transport test outcome of undifferentiated iPS cells.



Normal Cell Culture



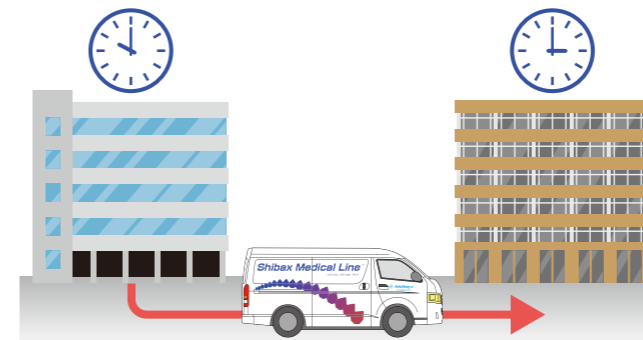
Cell Culture after delivery

In the result of dyeing ALP as undifferentiation markers, the cells could be similarly dyed under the both condistions, and ALP positivity could be confirmed.

Researched with REPROCELL Co.,Ltd.

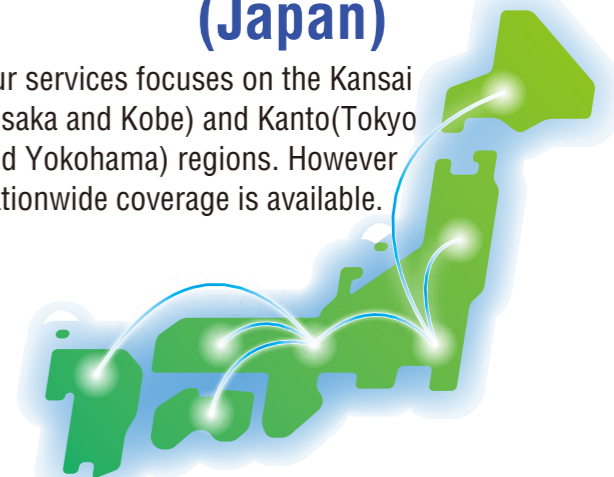
Delivery time can be specified

Chartered vehicles are available to pick-up and deliver at any time.



Nationwide Delivery (Japan)

Our services focuses on the Kansai (Osaka and Kobe) and Kanto(Tokyo and Yokohama) regions. However nationwide coverage is available.



Confidential service

Well-trained drivers who are knowledgeable about confidentiality and producing quality handling record.



Misdelivery prevention technology

We guarantee the safe delivery of materials, using our barcode reading management system.



By attaching a seal to the incubator, unopened condition can be confirmed on delivery.